

### Removal

- 1 Take cover out of padding and remove steering wheel (46.1–610).
- 2 The instrument cluster is held in recess by means of a profiled rubber section.

Pull instrument cluster out as far as possible, loosen speedometer shaft, the two electrical plug connections and the oil pressure line, then remove instrument cluster.

### Installation

- 3 For installation proceed vice versa.

**Note:** When connecting the speedometer, make sure that the speedometer shaft is not bent excessively to prevent running noises.

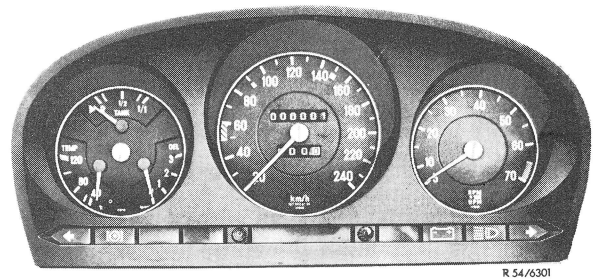


Fig. 1  
Instrument cluster

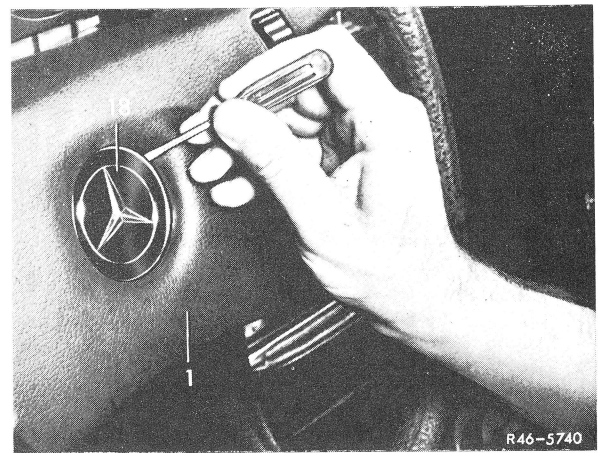


Fig. 2